

CORO
Organo

GLORIA IN EXCELSIS DEO

Stanisław Sylwester Szarzyński

Musical score for the first system, measures 1-5. The score includes five vocal parts (Canto I, Canto II, Alto, Tenore, Basso) and an Organ part. The vocal parts are in treble clef, and the organ part is in bass clef. The time signature is common time (C). The key signature is one flat (B-flat). The lyrics for Canto I and Canto II are: "Glo - ri - a glo - ri - a". The organ part consists of a series of whole notes in the bass clef.

Musical score for the second system, measures 6-11. The score includes five vocal parts (Canto I, Canto II, Alto, Tenore, Basso) and an Organ part. The vocal parts are in treble clef, and the organ part is in bass clef. The time signature is common time (C). The key signature is one flat (B-flat). The lyrics for Canto I and Canto II are: "glo - ri - a glo - ri - a in ex -". The organ part consists of a series of whole notes in the bass clef.

12

-cel - sis in ex - cel - sis De- -o!

-cel - sis in ex - cel - sis De- -o!

6 6 4[#] 3

17

Glo - ri - a glo - ri - a! Au -

Glo - ri - a glo - ri - a!

22

-di - te pa- -sto - res au - di - te pa- -sto - res: in Be - thle-hem

Au - di - te pa- -sto - res: in Be - thle-hem

27

na - tus Chri - stus no - bis da - tus

na - tus Chri - stus no - bis da - tus

6

32

[in Be - thle-hem na - tus Chri - stus no - bis
[in Be - thle-hem na - tus Chri - stus no - bis

6 6 5

37

da - tus. I - te i - te i - te i - te, a - do -
da - tus. I - te i - te i - te i - te, a - do -

6 6

43

-ra - te ja - cen - tem in prae - se - pi - o.

-ra - te ja - cen - tem in prae - se - pi - o.

Sur - ga - mus

[Sur - ga - mus om - nes,

6 # 6

47

om - nes, pro - pe - re - mus pro - pe - re - mus us - que Be - thle -

pro - pe - re - mus pro - pe - re - mus us - que Be - thle -

Sur - ga - mus om - nes, pro - pe - re - mus us - que Be - thle -

50

-hem, vi - [de - a - mus mi - ra - bi - lem pu - e - rum,
 -hem, vi - de - a - mus mi - ra - bi - lem pu - e - rum,
 -hem, vi - de - a - mus mi - ra - bi - lem pu - e - rum,

54

cu - i fa - mu - lan - tur an - ge - li, lae - tis a - do - rant mo - du - lis
 cu - i fa - mu - lan - tur an - ge - li, lae - tis a - do - rant mo - du - lis cu - i
 cu - i fa - mu - lan - tur an - ge - li

57

cu - i fa - mu - lan - tur an - ge - li, lae - tis a - do - rant a - do - rant mo - du -
 fa - mu - lan - tur an - ge - li, lae - tis a - do - rant mo - du - lis mo - du -
 an - ge - li cu - i fa - mu - lan - tur an - ge - li, lae - tis a - do - rant mo - du -

60

Glo - ri - a glo - ri - a,
 Glo - ri - a glo - ri - a,
 - lis.
 - lis.
 - [lis].

64

o pa - sto - res pa - sto - res,
o pa - sto - res pa - sto - res,

This musical system contains five staves. The top two staves are vocal parts with lyrics. The bottom three staves are organ accompaniment. The organ part consists of three staves: two treble clefs and one bass clef. The lyrics are: "o pa - sto - res pa - sto - res," on the first line and "o pa - sto - res pa - sto - res," on the second line. The organ accompaniment features a steady bass line and a treble line with dotted rhythms.

69

i - te i - te i - te i - te
i - te i - te i - te i - te

6 6

This musical system contains five staves. The top two staves are vocal parts with lyrics. The bottom three staves are organ accompaniment. The lyrics are: "i - te i - te i - te i - te" on the first line and "i - te i - te i - te i - te" on the second line. The organ accompaniment features a steady bass line and a treble line with dotted rhythms. The number "6" appears below the organ staves in the second and fourth measures.

74

i - te i - te i - te i - te, da - te

i - te i - te i - te i - te, da - te

79

lau - dem na - scen - ti, da - te me - los ja - cen - ti.

lau - dem na - scen - ti, da - te me - los ja - cen - ti.

6 # 6 5

84

Sur-ga - mus, e - a - mus sur-ga - mus, e - a - mus sur - ga - mus, e - a - mus sur - ga - mus, e - a - mus sur - ga - mus, e - a -

Sur-ga - mus, e - a - mus sur-ga - mus, e - a - mus sur - ga - mus, e - a - mus sur - ga - mus, e - a - mus sur - ga -

Sur-ga - mus, e - a - mus sur - ga - mus, e - a - mus sur - ga - mus, e - a - mus sur - ga - mus, e - a -

This section of the score covers measures 84 to 87. It features five staves: two for the vocal choir and three for the organ. The organ part consists of a right-hand part in G-clef and a left-hand part in C-clef. The vocal lines are in G-clef and include Latin lyrics. The organ accompaniment provides a rhythmic and harmonic foundation, with the right hand playing eighth-note patterns and the left hand playing a steady bass line.

88

- mus.

- mus.

- mus.

1234 3456

This section of the score covers measures 88 to 91. It features five staves: two for the vocal choir and three for the organ. The organ part consists of a right-hand part in G-clef and a left-hand part in C-clef. The vocal lines are in G-clef and include Latin lyrics. The organ accompaniment provides a rhythmic and harmonic foundation, with the right hand playing quarter notes and the left hand playing a steady bass line.

94

Sal - ve Je - su par - vu - le, sal - ve dul - cis, bel - lu - le, sal - ve cor - dis

Sal - ve Je - su par - vu - le, sal - ve dul - cis, bel - lu - le, sal - ve cor - dis

Sal - ve Je - su par - vu - le, sal - ve dul - cis, bel - lu - le, sal - ve cor - dis

1234 3456

98

gau - di - um, pec - to - ris in - cen - di - um.

gau - di - um, pec - to - ris in - cen - di - um].

gau - di - um, pec - to - ris in - cen - di - um.

1234

102

Sal - ve Je - su

Sal - ve Je - su

Sal - ve Je - su

Sal - ve Je - su

Sal - ve

3456 1234

107

par - vu - le, sal - ve dul - cis Je - su - le, sal - ve cor - dis gau - di - um, pe - cto -

par - vu - le, sal - ve dul - cis Je - su - le, sal - ve cor - dis gau - di - um, pe - cto -

par - vu - le, sal - ve dul - cis Je - su - le, sal - ve cor - dis gau - di - um, pe - cto -

par - vu - le, sal - ve dul - cis Je - su - le, sal - ve cor - dis gau - di - um, pe - cto -

na - te, no - bis da - te, cun - ctis

3456

III

-ris so - la - ti - um, sal - ve na - te, no - bis da - te, cun - ctis gra - te].

-ris so - la - ti - um, sal - ve na - te, no - bis da - te, cun - ctis gra - te].

-ris so - la - ti - um, sal - ve na - te, no - bis da - te, cun - ctis gra - te].

-ris so - la - ti - um, sal - ve na - te, no - bis [da - te, cun - ctis] gra - te.

gra - te no - bis da - te, cun - ctis gra - te.

3453 1231 # 6

Trombone Alto

GLORIA IN EXCELSIS DEO

Stanisław Sylwester Szarzyński



6 4 Canto I, II

De-

17 6 Canto I, II

na - tus Chri - stus no - bis

29

1 (-5) 2 3 4 5

38 6 Canto I, II Tenore 3

cen - tem in prae - se - pi - [Sur - ga - mus om - nes,

50 4 6 Canto I, II

Glo - ri - a glo - ri - a,

64 11

81 Canto I, II Alto

da - te me - los ja - cen - ti. Sur - ga - mus, e - a - mus sur - ga - mus, e - a -

86

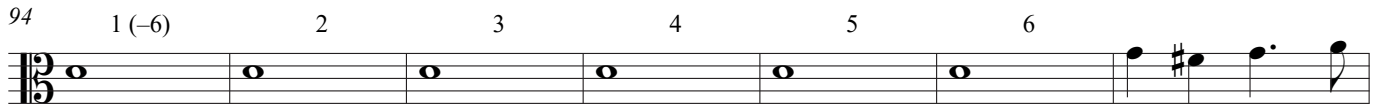
-mus sur - ga - mus, e - a - mus sur - ga - mus, e - a

90



94

1 (-6) 2 3 4 5 6



101



106



111



Trombone Tenore

GLORIA IN EXCELSIS DEO

Stanisław Sylwester Szarzyński



7 4 Canto I, II

De-

17 6 Canto I, II

na - tus Chri - stus no - bis

29 1 (-6) 2

35 6 Canto I, II

cen - tem in prae - se - pi -

46 3 4 6 Canto I, II

Tenore

[Sur - ga - mus om - nes, Glo - ri - a glo - ri - a,

62

68 11 Canto I, II

da - te me - los ja - cen - ti.

84 Alto

Sur - ga - mus, e - a - mus sur - ga - mus, e - a - mus sur - ga - mus, e - a - mus sur - ga - mus, e - a

88

Musical staff 88-92 in bass clef with a 2/4 time signature. It contains five measures of music. The first measure has a dotted quarter note followed by an eighth note. The second measure has a quarter note followed by an eighth note. The third measure has a dotted quarter note followed by an eighth note. The fourth measure has a quarter note followed by an eighth note. The fifth measure has a quarter note followed by an eighth note.

93

Musical staff 93-98 in bass clef with a 2/4 time signature. It contains six measures. The first measure has a quarter note followed by an eighth note. The second measure has a quarter note followed by an eighth note. The third measure has a quarter note followed by an eighth note. The fourth measure has a quarter note followed by an eighth note. The fifth measure has a quarter note followed by an eighth note. The sixth measure has a quarter note followed by an eighth note. Above the staff, the numbers 1 (-6), 2, 3, 4, 5, and 6 are written above the notes in measures 2 through 7 respectively.

100

Musical staff 100-104 in bass clef with a 2/4 time signature. It contains five measures. The first measure has a quarter note followed by an eighth note. The second measure has a quarter note followed by an eighth note. The third measure has a quarter note followed by an eighth note. The fourth measure has a quarter note followed by an eighth note. The fifth measure has a quarter note followed by an eighth note.

105

Musical staff 105-109 in bass clef with a 2/4 time signature. It contains five measures. The first measure has a quarter note followed by an eighth note. The second measure has a quarter note followed by an eighth note. The third measure has a quarter note followed by an eighth note. The fourth measure has a quarter note followed by an eighth note. The fifth measure has a quarter note followed by an eighth note.

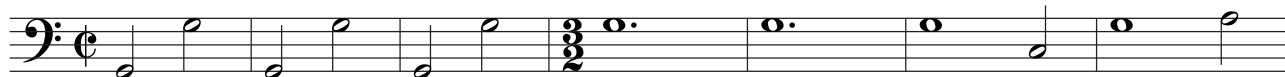
110

Musical staff 110-114 in bass clef with a 2/4 time signature. It contains five measures. The first measure has a quarter note followed by an eighth note. The second measure has a quarter note followed by an eighth note. The third measure has a quarter note followed by an eighth note. The fourth measure has a quarter note followed by an eighth note. The fifth measure has a quarter note followed by an eighth note.

Viola

GLORIA IN EXCELSIS DEO

Stanisław Sylwester Szarzyński



8 **4** Canto I, II
De-

18 **6** Canto I, II
na - tus Chri - stus no - bis

30 1 (-5) 2 3 4 5

38 **6** Canto I, II Tenore
cen - tem in prae - se - pi - [Sur - ga - mus om - nes,

47 **3** **4** **6** Canto I, II
Glo - ri - a glo - ri - a,

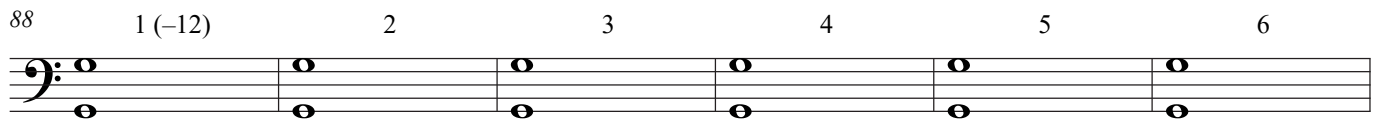
62

69 **11** Canto I, II
da - te me - los ja - cen - ti.

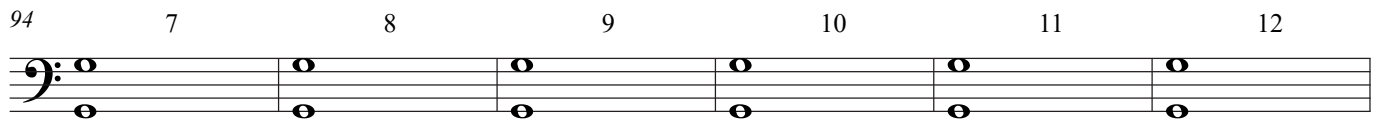
84 Alto
Sur - ga - mus, e - a - mus sur - ga - mus, e - a - mus sur - ga - mus, e - a - mus sur - ga - mus, e - a

Viola

88 1 (-12) 2 3 4 5 6



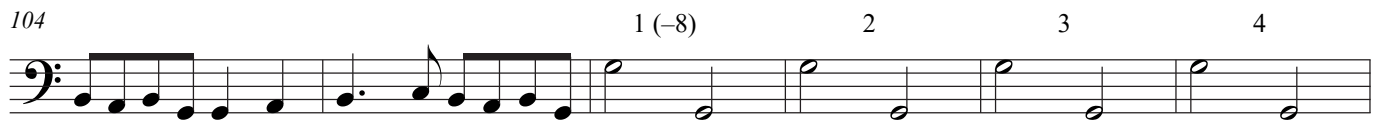
94 7 8 9 10 11 12



100



104 1 (-8) 2 3 4



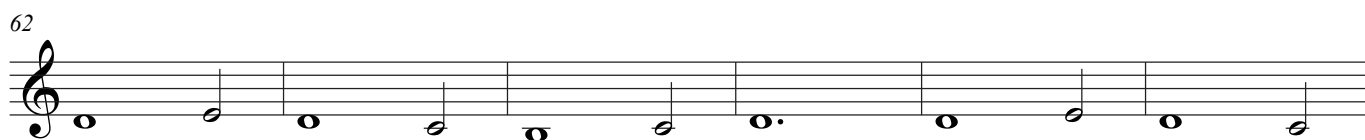
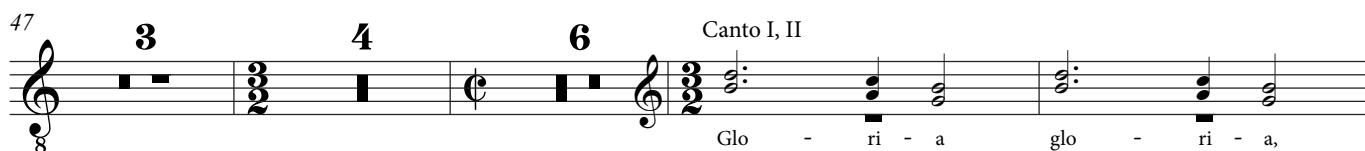
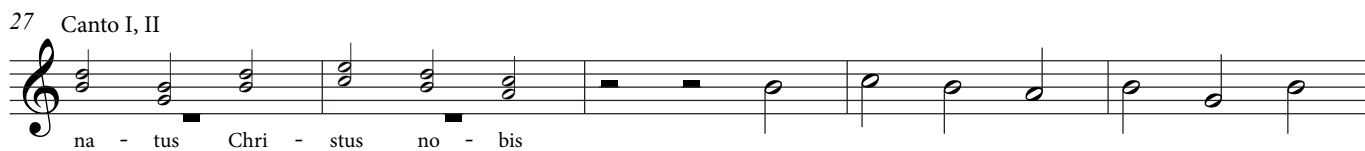
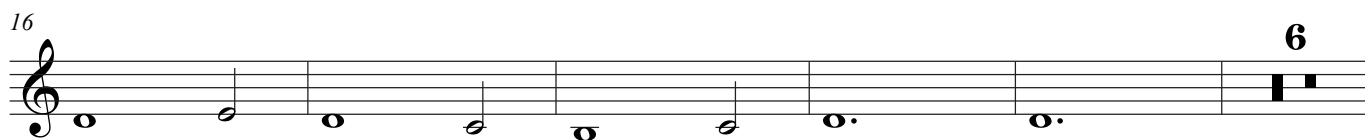
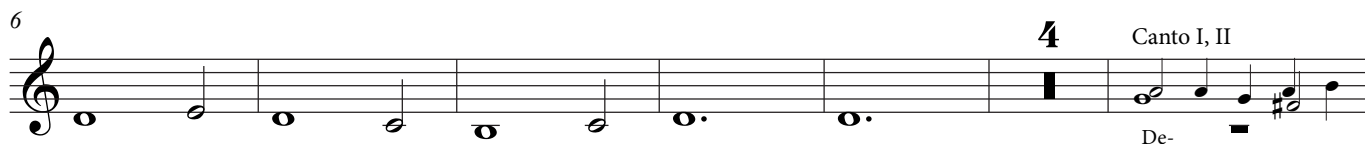
110 5 6 7 8



Violino I

GLORIA IN EXCELSIS DEO

Stanisław Sylwester Szarzyński



84 Alto

Sur-ga - mus, e - a - mus sur-ga - mus, e - a - mus sur-ga - mus, e - a - mus sur-ga - mus, e - a

88

92

97

103

107

111

Violino II

GLORIA IN EXCELSIS DEO

Stanisław Sylwester Szarzyński

7 4 Canto I, II

De-

16 6 Canto I, II

na - tus Chri -

28

- stus no - bis

33 6 Canto I, II

cen - tem in

45 Tenore 3 4 6 Canto I, II

prae - se - pi - [Sur-ga-mus om - nes, Glo - ri - a

61

glo - ri - a,

67 11 Canto I, II

da - te me - los ja -

83 Alto

- cen - ti.
Sur-ga-mus, e - a - mus sur-ga-mus, e - a - mus sur-ga-mus, e - a - mus sur-ga-mus, e - a

88

93

100

105

110